





**SUBMITTAL DATA SHEET**

<b>A-Coil Heat Pump System</b>	
Location: _____	Approval: _____
Engineer: _____	Date: _____
Submitted to: _____	Construction: _____
Submitted by: _____	Unit #: _____
Reference: _____	Drawing #: _____

<b>Set Code</b>	22023110000769
Indoor unit code	22023111000491
Outdoor unit code	22023116000083
<b>Set Model</b>	
Indoor unit model	MAC-A6024
Outdoor unit model	MOU-A60V-4
<b>Certified</b>	
AHRI	
UL	



SYSTEM PERFORMANCE DATA			
<b>Power supply</b>			
Normal Operational Voltage	(V, Ph, Hz)	208/230V, 1Ph, 60Hz	
Voltage Range	(V)	187-253	
<b>Electrical</b>			
Minimum circuit ampacity(Outdoor)	(A)	34.0	
Max.fuse(Outdoor)	(A)	60.0	
Connection wiring		N/A	
<b>Cooling</b>			
Capacity	(Btu/h)	53000(13000-55000)	
Power Input	(W)	5874(550-6260)	
Current	(A)	23.8(2.2-25.3)	
SEER2	(Btu/W)	15.2	
EER2	(Btu/W)	9.0	
<b>Heating</b>			
Capacity	(Btu/h)	54000(15000-63000)	
Power Input	(W)	5050(790-5900)	
Current	(A)	20(4.13-25)	
HSPF2-4	(Btu/W)	8.5	
HSPF2-5	(Btu/W)	6.6	
COP	W/W	3.13	
Heat at 17F(H32)	(Btu/h)	34000	
Heat at 5F(H42)	(Btu/h)	32000	
COP at 5F(H42)	W/W	1.90	

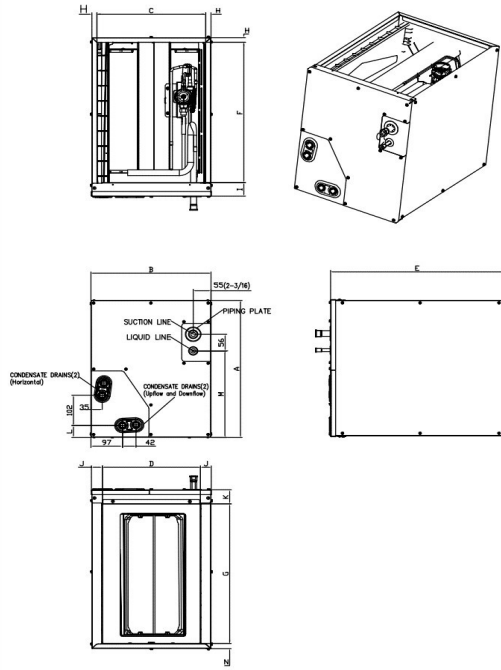
INDOOR UNIT DATA			
<b>IRV</b>	inch^3		190.00
<b>Air flow</b>	SCFM		1100
<b>Pressure drop</b>	Pa		72.00
	In. wg.		0.29
<b>Air flow &amp; Noise level</b>			
Indoor air flow (Hi/Med/Lo) (No duct)	(CFM)		/1117.65/1117
Indoor noise level (Hi/Med/Lo)	[dB(A)]		0/0/0
<b>Dehumidification</b>	(L/H)		7.897/8.16
<b>Indoor unit</b>			
Dimension (WxDxH)	(inch)	24.49x20.98x27.99	
	(mm)	622x533x711	
Packing(WxDxH)	(inch)	27.76x26.18x30.31	
	(mm)	705x665x770	
Net/Gross weight	(lbs.)	86.64/98.33	
	(kg)	39.3/44.6	

REFRIGERANT PIPE DATA			
Throttle type	Indoor unit	TXV	
	Outdoor unit	EEV for heating	
Design pressure	(PSIG)	550/340	
Refrigerant Type		R410A	
Refrigerant charge	oz	172.84	
	(ft)	25.0	
Refrigerant precharge	(m)	7.5	
Additional charge for each ft	(oz/ft)	0.69	
Additional charge for each m	(g/m)	65.0	
Liquid side/ Gas side(indoor)	(inch)	3/8" / 7/8"	
	(mm)	9.52/22	
Liquid side/ Gas side(outdoor)	(inch)	3/8" / 7/8"	
	(mm)	9.52/22	
Max. pipe length	(ft)	213.3	
	(m)	65.0	
Max. difference in level	(ft)	98.4	
	(m)	30.0	
Connection method		Flared	
Indoor(cooling)	(Deg. °F)	60 ~ 90	
	(Deg. °C)	16 ~ 32	
Indoor(heating)	(Deg. °F)	32 ~ 86	
	(Deg. °C)	0 ~ 30	
Outdoor(cooling)	(Deg. °F)	5 ~ 122	
	(Deg. °C)	-15 ~ 50	
Outdoor(heating)	(Deg. °F)	-13 ~ 75	
	(Deg. °C)	-25 ~ 24	

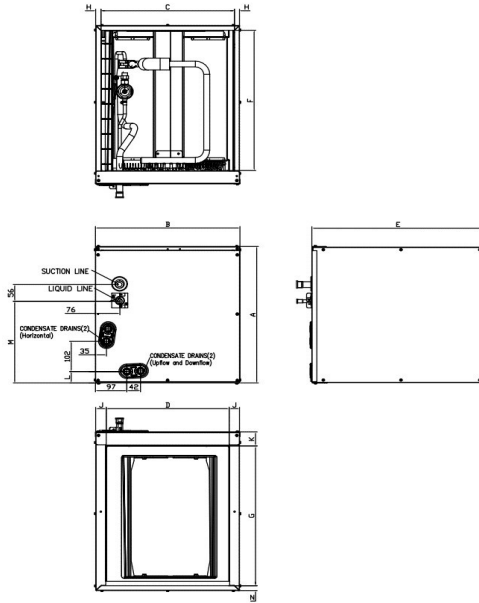
OUTDOOR UNIT DATA			
<b>Compressor</b>			
Type			ROTARY
Model			KTQ420D1UMU
Brand			GMCC
Capacity	(Btu/h)		46744
Input	(W)		3700
Rated current (RLA)	(A)		24.6
Refrigerant oil/oil charge	(ml)		VG74/1400
<b>Outdoor fan motor</b>			
Model			ZKFN-85-8-22-5
Qty			2
Input	(W)		126.0
Output	(W)		85
RLA	(A)		2.4
Speed	(r/min)		900/850/650
<b>Air flow &amp; Noise level</b>			
Outdoor air flow (Max.)	(CFM)		4412
Outdoor noise level	[dB(A)]		62.0
<b>Outdoor unit</b>			
Dimension (WxDxH)	(inch)	37.48x16.34x52.48	
	(mm)	952x415x1333	
Packing (WxDxH)	(inch)	43.11x19.49x58.27	
	(mm)	1095x495x1480	
Net/ Gross weight	(lbs.)	217.15/248.46	
	(kg)	98.5/112.7	

Indoor unit dimension

NEW PANEL STYLE



OLD PANEL STYLE



Dimensions	KV-14F-A		KV-14F-B		KV-17F-A		KV-17F-B		KV-21F-A		KV-21F-B		KV-24F-A	
	NEW PANEL STYLE		NEW PANEL STYLE		NEW PANEL STYLE		OLD PANEL STYLE		NEW PANEL STYLE		OLD PANEL STYLE		OLD PANEL STYLE	
	18K/20K/22K/24K	30K (未販売)	18K/20K/22K/24K	30K (未販売)	30K/36K	30K/36K	18K/24K	30K/36K/48K	48K	60K	60K	60K	60K	60K
A Model Height	18	457	23-1/2	598	23-1/2	599	18	461	24	609	28	711	28	711
B Model Width	14-1/2	368	14-1/2	368	17-1/2	445	17-1/2	445	21	533	21	533	24-1/2	622
C Supply Air Opening Width	13-1/4	336	13-1/4	336	16-3/16	411	16-3/16	411	19-3/4	502	19-3/4	502	23-1/4	591
D Return Air Opening Width	12	303	12	303	15-1/8	384	15-1/8	384	19-1/2	496	19-1/2	496	23	585
E Model Depth	21	534	21	534	21	533	21	533	21	533	21	533	21	533
F Supply Air Opening Depth	18-5/8	473	18-5/8	473	18-5/8	473	18-5/8	473	18-5/8	473	18-5/8	473	18-5/8	473
G Return Air Opening Depth	18-1/2	471	18-1/2	471	18	458	18	458	18-1/2	470	18-1/2	470	18-1/2	470
H Supply Air Opening Side Clearance	5/8	16	5/8	16	5/8	16	5/8	16	5/8	16	5/8	16	5/8	16
I Supply Air Opening Front Clearance	1-3/4	45	1-3/4	45	1-3/4	45	1-3/4	45	1-3/4	45	1-3/4	45	1-3/4	45
J Return Air Opening Side Clearance	5/8	16	5/8	16	1-3/16	30	1-3/16	30	3/4	19	3/4	19	3/4	19
K Return Air Opening Front Clearance	1-13/16	46	1-13/16	46	1-13/16	46	1-13/16	46	1-13/16	46	1-13/16	46	1-13/16	46
L Condensate Drains Height	1-9/16	40	1-9/16	40	1-7/16	37	1-7/16	37	2-1/8	54	2-1/8	54	2-1/8	54
M Liquid Line Height	11-1/2	292	11-1/2	292	16-1/2	418	10-7/8	276	16-5/16	414	21	533	20-1/4	514
N Return Air Opening Side Clearance	3/4	19	3/4	19	3/4	19	1-3/16	30	3/4	19	3/4	19	3/4	19

Outdoor unit dimension

