



SUBMITTAL DATA SHEET

A-Coil Heat Pump System	
Location: _____	Approval: _____
Engineer: _____	Date: _____
Submitted to: _____	Construction: _____
Submitted by: _____	Unit #: _____
Reference: _____	Drawing #: _____

Set Code	22023110000770
Indoor unit code	22023111000492
Outdoor unit code	22023116000103
Set Model	
Indoor unit model	MAC-A4821
Outdoor unit model	MOU-A48V-4
Certified	
AHRI	
UL	



SYSTEM PERFORMANCE DATA		
Power supply		
Normal Operational Voltage	(V, Ph, Hz)	208/230V, 1Ph, 60Hz
Voltage Range	(V)	187-253
Electrical		
Minimum circuit ampacity(Outdoor)	(A)	34.0
Max.fuse(Outdoor)	(A)	50.0
Connection wiring		N/A
Cooling		
Capacity	(Btu/h)	48000(12000~48000)
Power Input	(W)	5650(540~5330)
Current	(A)	22.3(3~22.5)
SEER2	(Btu/W)	14.3
EER2	(Btu/W)	8.6
Heating		
Capacity	(Btu/h)	51000(11000~54000)
Power Input	(W)	5150(710~5580)
Current	(A)	22(3.6~22.5)
HSPF2-4	(Btu/W)	8.3
HSPF2-5	(Btu/W)	6.6
COP	W/W	2.90
Heat at 17F(H32)	(Btu/h)	30500
Heat at 5F(H42)	(Btu/h)	28000
COP at 5F(H42)	W/W	1.80

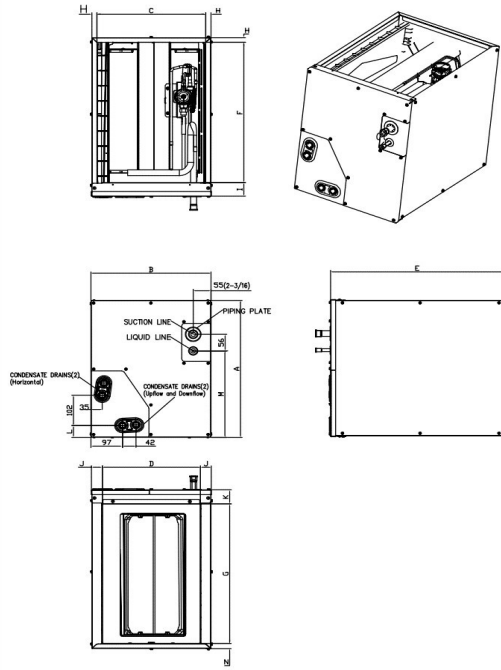
INDOOR UNIT DATA		
IRV	inch^3	158.00
Air flow	SCFM	1015
Pressure drop	Pa	70.00
	In. wg.	0.28
Air flow & Noise level		
Indoor air flow (Hi/Med/Lo) (No duct)	(CFM)	//1029.41//
Indoor noise level (Hi/Med/Lo)	[dB(A)]	0/0/0
Dehumidification	(LH)	6.941/7.676
Indoor unit		
Dimension (WxDxH)	(inch)	20.98x20.98x23.98
	(mm)	533x533x609
Packing(WxDxH)	(inch)	24.02x26.18x26.38
	(mm)	610x665x670
Net/Gross weight	(lbs.)	66.58/77.16
	(kg)	30.2/35

REFRIGERANT PIPE DATA		
Throttle type	Indoor unit	TXV
	Outdoor unit	EEV for heating
Design pressure	(PSIG)	550/340
Refrigerant Type		R410A
Refrigerant charge	oz	165.79
	(ft)	25.0
Refrigerant precharge	(m)	7.5
Additional charge for each ft	(oz/ft)	0.69
Additional charge for each m	(g/m)	65.0
Liquid side/ Gas side(indoor)	(inch)	3/8" / 3/4"
	(mm)	9.52/19
Liquid side/ Gas side(outdoor)	(inch)	3/8" / 3/4"
	(mm)	9.52/19
Max. pipe length	(ft)	213.3
	(m)	65.0
Max. difference in level	(ft)	98.4
	(m)	30.0
Connection method		Flared
Indoor(cooling)	(Deg. °F)	60~90
	(Deg. °C)	16~32
Indoor(heating)	(Deg. °F)	32~86
	(Deg. °C)	0~30
Outdoor(cooling)	(Deg. °F)	5~122
	(Deg. °C)	-15~50
Outdoor(heating)	(Deg. °F)	-13~75
	(Deg. °C)	-25~24

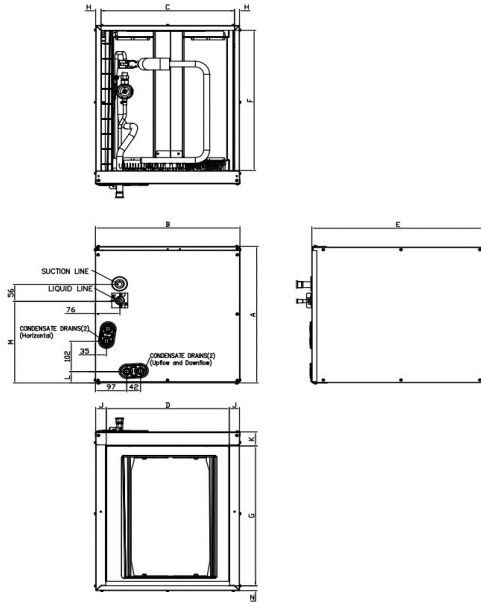
OUTDOOR UNIT DATA		
Compressor		
Type		ROTARY
Model		KTQ420D1UMU
Brand		GMCC
Capacity	(Btu/h)	46744
Input	(W)	3700
Rated current (RLA)	(A)	24
Refrigerant oil/oil charge	(ml)	VG74/1400
Outdoor fan motor		
Model		ZKFN-85-8-22-5
Qty		2
Input	(W)	126.0
Output	(W)	85
RLA	(A)	2.4
Speed	(r/min)	850/750/650
Air flow & Noise level		
Outdoor air flow (Max.)	(CFM)	4500
Outdoor noise level	[dB(A)]	63.0
Outdoor unit		
Dimension (WxDxH)	(inch)	37.48x16.34x52.48
	(mm)	952x415x1333
Packing (WxDxH)	(inch)	43.11x19.49x58.27
	(mm)	1095x495x1480
Net/ Gross weight	(lbs.)	217.59/248.68
	(kg)	98.7/112.8

Indoor unit dimension

NEW PANEL STYLE



OLD PANEL STYLE



Dimensions	Model(Btu/h)	KV-14F-A		KV-14F-B		KV-17F-A		KV-17F-B		KV-21F-A		KV-21F-B		KV-24F-A	
		NEW PANEL STYLE		NEW PANEL STYLE		NEW PANEL STYLE		OLD PANEL STYLE		NEW PANEL STYLE		OLD PANEL STYLE		OLD PANEL STYLE	
		18K/20K/22K/24K	30K (未販売)	18K/20K/22K/24K	30K (未販売)	30K/36K	30K/36K	18K/24K	30K/36K/48K	48K	60K	60K	60K	60K	60K
A	Model Height	18	457	23-1/2	598	23-1/2	599	18	461	24	609	28	711	28	711
B	Model Width	14-1/2	368	14-1/2	368	17-1/2	445	17-1/2	445	21	533	21	533	24-1/2	622
C	Supply Air Opening Width	13-1/4	336	13-1/4	336	16-3/16	411	16-3/16	411	19-3/4	502	19-3/4	502	23-1/4	591
D	Return Air Opening Width	12	303	12	303	15-1/8	384	15-1/8	384	19-1/2	496	19-1/2	496	23	585
E	Model Depth	21	534	21	534	21	533	21	533	21	533	21	533	21	533
F	Supply Air Opening Depth	18-5/8	473	18-5/8	473	18-5/8	473	18-5/8	473	18-5/8	473	18-5/8	473	18-5/8	473
G	Return Air Opening Depth	18-1/2	471	18-1/2	471	18	458	18	458	18-1/2	470	18-1/2	470	18-1/2	470
H	Supply Air Opening Side Clearance	5/8	16	5/8	16	5/8	16	5/8	16	5/8	16	5/8	16	5/8	16
I	Supply Air Opening Front Clearance	1-3/4	45	1-3/4	45	1-3/4	45	1-3/4	45	1-3/4	45	1-3/4	45	1-3/4	45
J	Return Air Opening Side Clearance	5/8	16	5/8	16	1-3/16	30	1-3/16	30	3/4	19	3/4	19	3/4	19
K	Return Air Opening Front Clearance	1-13/16	46	1-13/16	46	1-13/16	46	1-13/16	46	1-13/16	46	1-13/16	46	1-13/16	46
L	Condensate Drains Height	1-9/16	40	1-9/16	40	1-7/16	37	1-7/16	37	2-1/8	54	2-1/8	54	2-1/8	54
M	Liquid Line Height	11-1/2	292	11-1/2	292	16-1/2	418	10-7/8	276	16-5/16	414	21	533	20-1/4	514
N	Return Air Opening Side Clearance	3/4	19	3/4	19	3/4	19	1-3/16	30	3/4	19	3/4	19	3/4	19

Outdoor unit dimension

