



SUBMITTAL DATA SHEET

A-Coil Heat Pump System

Location: _____ Engineer: _____ Submitted to: _____ Submitted by: _____ Reference: _____	Approval: _____ Date: _____ Construction: _____ Unit #: _____ Drawing #: _____
--	--

Set Code	22023110001528
Indoor unit code	22023111000690
Outdoor unit code	22023116000082
Set Model	
Indoor unit model	MAC-A3617
Outdoor unit model	MOU-A36V-4
Certified	
AHRI	
UL	



SYSTEM PERFORMANCE DATA

Power supply		
Normal Operational Voltage	(V, Ph, Hz)	208/230V, 1Ph, 60Hz
Voltage Range	(V)	187-253
Electrical		
Minimum circuit ampacity(Outdoor)	(A)	24.0
Max.fuse(Outdoor)	(A)	40.0
Connection wiring		N/A
Cooling		
Capacity	(Btu/h)	35000(9800~36000)
Power Input	(W)	3600(637~4300)
Current	(A)	15.65(2.76~18.69)
SEER2	(Btu/W)	14.6
EER2	(Btu/W)	9.7
Heating		
Capacity	(Btu/h)	36000(7800~36000)
Power Input	(W)	3300(570~3373)
Current	(A)	14.34(2.47~14.66)
HSPF2-4	(Btu/W)	7.7
HSPF2-5	(Btu/W)	6.1
COP	W/W	3.20
Heat at 17F(H32)	(Btu/h)	19400
Heat at 5F(H42)	(Btu/h)	20200
COP at 5F(H42)	W/W	1.91

REFRIGERANT PIPE DATA

Throttle type	Indoor unit	TXV
	Outdoor unit	EEV for heating
Design pressure	(PSIG)	550/340
Refrigerant Type		R410A
Refrigerant charge	oz	130.51
Refrigerant precharge	(ft)	25.0
	(m)	7.5
Additional charge for each ft	(oz/ft)	0.69
Additional charge for each m	(g/m)	65.0
Liquid side/ Gas side(indoor)	(inch)	3/8" / 3/4"
	(mm)	9.52/19
Liquid side/ Gas side(outdoor)	(inch)	3/8" / 3/4"
	(mm)	9.52/19
Max. pipe length	(ft)	213.3
	(m)	65.0
Max. difference in level	(ft)	98.4
	(m)	30.0
Connection method		Flared
Indoor(cooling)	(Deg. °F)	60~90
	(Deg. °C)	16~32
Indoor(heating)	(Deg. °F)	32~86
	(Deg. °C)	0~30
Outdoor(cooling)	(Deg. °F)	5~122
	(Deg. °C)	-15~50
Outdoor(heating)	(Deg. °F)	-13~75
	(Deg. °C)	-25~24

INDOOR UNIT DATA

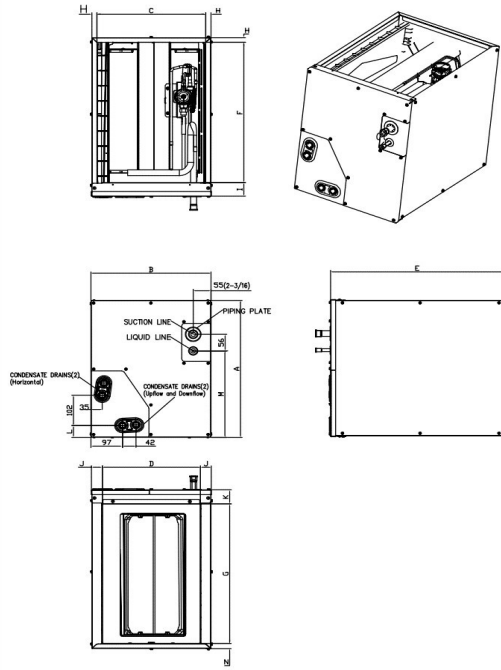
IRV	inch^3	106.90
Air flow	SCFM	880
Pressure drop	Pa	70.00
	In. wg.	0.28
Air flow & Noise level		
Indoor air flow (Hi/Med/Lo) (No duct)	(CFM)	//882.35//
Indoor noise level (Hi/Med/Lo)	[dB(A)]	0/0/0
Dehumidification	(L/H)	4.645
Indoor unit		
Dimension (WxDxH)	(inch)	17.52x20.98x23.58
	(mm)	445x533x599
Packing(WxDxH)	(inch)	20.47x26.18x25.39
	(mm)	520x665x645
Net/Gross weight	(lbs.)	60.19/69.00
	(kg)	27.3/31.3

OUTDOOR UNIT DATA

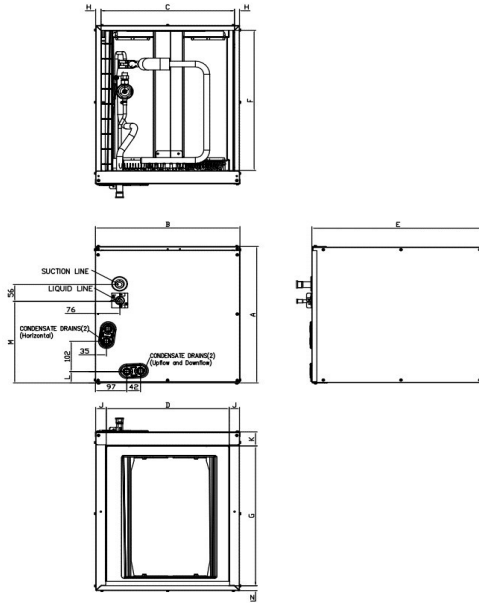
Compressor		
Type		ROTARY
Model		KTF250D22UMT
Brand		GMCC
Capacity	(Btu/h)	27620
Input	(W)	2200
Rated current (RLA)	(A)	17.6
Refrigerant oil/oil charge	(ml)	VG74/670
Outdoor fan motor		
Model		ZKFN-120-8-2
Qty		1
Input	(W)	150.0
Output	(W)	120
RLA	(A)	1.5
Speed	(r/min)	1150/1050/900/850
Air flow & Noise level		
Outdoor air flow (Max.)	(CFM)	2235
Outdoor noise level	[dB(A)]	63.0
Outdoor unit		
Dimension (WxDxH)	(inch)	37.24x16.14x31.89
	(mm)	946x410x810
Packing (WxDxH)	(inch)	42.91x19.69x34.84
	(mm)	1090x500x885
Net/ Gross weight	(lbs.)	151.68/161.16
	(kg)	68.8/73.1

Indoor unit dimension

NEW PANEL STYLE



OLD PANEL STYLE



Dimensions	Model(Btu/h)	KV-14F-A		KV-14F-B		KV-17F-A		KV-17F-B		KV-21F-A		KV-21F-B		KV-24F-A	
		NEW PANEL STYLE		NEW PANEL STYLE		NEW PANEL STYLE		OLD PANEL STYLE		NEW PANEL STYLE		OLD PANEL STYLE		OLD PANEL STYLE	
		18K/20K/22K/24K	30K (未販売)	18K/20K/22K/24K	30K (未販売)	30K/36K	18K/24K	30K/36K/48K	48K	60K					
A	Model Height	18	457	23-1/2	598	23-1/2	599	18	461	24	609	28	711	28	711
B	Model Width	14-1/2	368	14-1/2	368	17-1/2	445	17-1/2	445	21	533	21	533	24-1/2	622
C	Supply Air Opening Width	13-1/4	336	13-1/4	336	16-3/16	411	16-3/16	411	19-3/4	502	19-3/4	502	23-1/4	591
D	Return Air Opening Width	12	303	12	303	15-1/8	384	15-1/8	384	19-1/2	496	19-1/2	496	23	585
E	Model Depth	21	534	21	534	21	533	21	533	21	533	21	533	21	533
F	Supply Air Opening Depth	18-5/8	473	18-5/8	473	18-5/8	473	18-5/8	473	18-5/8	473	18-5/8	473	18-5/8	473
G	Return Air Opening Depth	18-1/2	471	18-1/2	471	18	458	18	458	18-1/2	470	18-1/2	470	18-1/2	470
H	Supply Air Opening Side Clearance	5/8	16	5/8	16	5/8	16	5/8	16	5/8	16	5/8	16	5/8	16
I	Supply Air Opening Front Clearance	1-3/4	45	1-3/4	45	1-3/4	45	1-3/4	45	1-3/4	45	1-3/4	45	1-3/4	45
J	Return Air Opening Side Clearance	5/8	16	5/8	16	1-3/16	30	1-3/16	30	3/4	19	3/4	19	3/4	19
K	Return Air Opening Front Clearance	1-13/16	46	1-13/16	46	1-13/16	46	1-13/16	46	1-13/16	46	1-13/16	46	1-13/16	46
L	Condensate Drains Height	1-9/16	40	1-9/16	40	1-7/16	37	1-7/16	37	2-1/8	54	2-1/8	54	2-1/8	54
M	Liquid Line Height	11-1/2	292	11-1/2	292	16-1/2	418	10-7/8	276	16-5/16	414	21	533	20-1/4	514
N	Return Air Opening Side Clearance	3/4	19	3/4	19	3/4	19	1-3/16	30	3/4	19	3/4	19	3/4	19

Outdoor unit dimension

