



## SUBMITTAL DATA SHEET

| One Way Cassette Heat Pump System |                     |
|-----------------------------------|---------------------|
| Location: _____                   | Approval: _____     |
| Engineer: _____                   | Date: _____         |
| Submitted to: _____               | Construction: _____ |
| Submitted by: _____               | Unit #: _____       |
| Reference: _____                  | Drawing #: _____    |

|                    |                |
|--------------------|----------------|
| <b>Set Code</b>    | 22022510004446 |
| Indoor unit code   | 22022511003396 |
| Outdoor unit code  | 22022016015920 |
| <b>Set Model</b>   |                |
| Indoor unit model  | MIU-A24C-2     |
| Outdoor unit model | MOU-A24H-2     |
| <b>Certified</b>   |                |
| AHRI               |                |
| UL                 |                |
|                    |                |



### SYSTEM PERFORMANCE DATA

|                                   |             |                     |
|-----------------------------------|-------------|---------------------|
| <b>Power supply</b>               |             |                     |
| Normal Operational Voltage        | (V, Ph, Hz) | 208/230V, 1Ph, 60Hz |
| Voltage Range                     | (V)         | 187-253             |
| <b>Electrical</b>                 |             |                     |
| Minimum circuit ampacity(Outdoor) | (A)         | 25.0                |
| Max.fuse(Outdoor)                 | (A)         | 35.0                |
| Connection wiring                 |             | 14*4 AWG            |
| <b>Cooling</b>                    |             |                     |
| Capacity                          | (Btu/h)     | 24000(8000~25000)   |
| Power Input                       | (W)         | 2182(330~1560)      |
| Current                           | (A)         | 8.5(2.6~11)         |
| SEER2                             | (Btu/W)     | 20.5                |
| EER2                              | (Btu/W)     | 11.0                |
| <b>Heating</b>                    |             |                     |
| Capacity                          | (Btu/h)     | 25000(11800~27000)  |
| Power Input                       | (W)         | 2093(685~2814)      |
| Current                           | (A)         | 9.8(4.4~12.8)       |
| HSPF2-4                           | (Btu/W)     | 11.5                |
| HSPF2-5                           | (Btu/W)     | 9.2                 |
| COP                               | W/W         | 3.50                |
| Heat at 17F(H32)                  | (Btu/h)     | 21000               |
| Heat at 5F(H42)                   | (Btu/h)     | 25800               |
| COP at 5F(H42)                    | W/W         | 2.00                |

### REFRIGERANT PIPE DATA

|                                |              |                    |
|--------------------------------|--------------|--------------------|
| Throttle type                  | Indoor unit  | N/A                |
|                                | Outdoor unit | EXV+Throttle valve |
| Design pressure                | (PSIG)       | 550/340            |
| Refrigerant Type               |              | R410A              |
| Refrigerant charge             | oz           | 91.71              |
| Refrigerant precharge          | (ft)         | 25.0               |
|                                | (m)          | 7.5                |
| Additional charge for each ft  | (oz/ft)      | 0.32               |
| Additional charge for each m   | (g/m)        | 30.0               |
| Liquid side/ Gas side(indoor)  | (inch)       | 3/8" / 5/8"        |
|                                | (mm)         | 9.52/15.9          |
| Liquid side/ Gas side(outdoor) | (inch)       | 3/8" / 5/8"        |
|                                | (mm)         | 9.52/15.9          |
| Max. pipe length               | (ft)         | 164.0              |
|                                | (m)          | 50.0               |
| Max. difference in level       | (ft)         | 82.0               |
|                                | (m)          | 25.0               |
| Connection method              |              | Flared             |
| Indoor(cooling)                | (Deg. °F)    | 60~90              |
|                                | (Deg. °C)    | 16~32              |
| Indoor(heating)                | (Deg. °F)    | 32~86              |
|                                | (Deg. °C)    | 0~30               |
| Outdoor(cooling)               | (Deg. °F)    | -22~122            |
|                                | (Deg. °C)    | -30~50             |
| Outdoor(heating)               | (Deg. °F)    | -22~75             |
|                                | (Deg. °C)    | -30~24             |

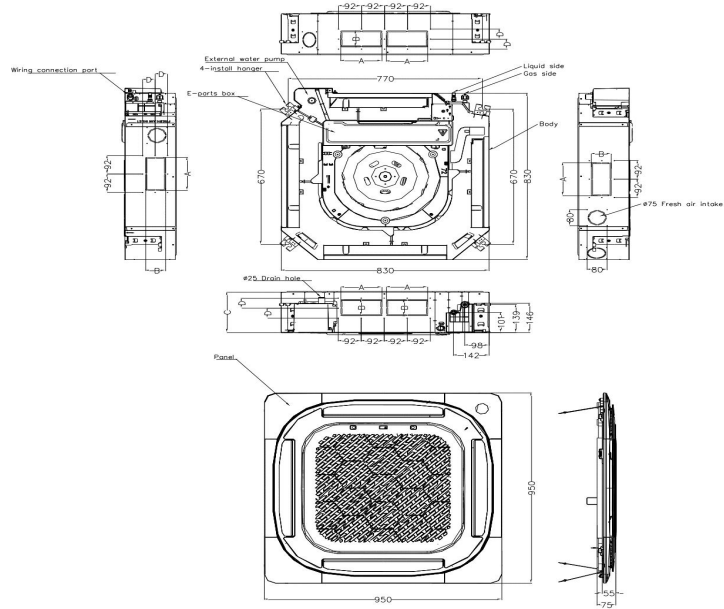
### INDOOR UNIT DATA

|                                       |         |                             |
|---------------------------------------|---------|-----------------------------|
| <b>Indoor fan motor</b>               |         |                             |
| Model                                 |         | ZKFN-45-8-1                 |
| Qty                                   |         | 1                           |
| Input                                 | (W)     | /                           |
| Output                                | (W)     | 45.0                        |
| RLA                                   | (A)     | 1.00                        |
| Speed(Hi/Mi/Lo)                       | (r/min) | 680/624/568/512             |
| <b>Air flow &amp; Noise level</b>     |         |                             |
| Indoor air flow (Hi/Med/Lo) (No duct) | (CFM)   | 764.71/705.88/635.29/547.06 |
| Indoor noise level (Hi/Med/Lo)        | [dB(A)] | 48/45.5/43                  |
| <b>Dehumidification</b>               | (L/H)   | 2.72                        |
| <b>Indoor unit</b>                    |         |                             |
| Dimension (WxDxH)                     | (inch)  | 32.68x32.68x8.07            |
|                                       | (mm)    | 830x830x205                 |
| Packing(WxDxH)                        | (inch)  | 35.83x35.83x9.84            |
|                                       | (mm)    | 910x910x250                 |
| Net/Gross weight                      | (lbs.)  | 47.18/55.34                 |
|                                       | (kg)    | 21.4/25.1                   |

### OUTDOOR UNIT DATA

|                                   |         |                    |
|-----------------------------------|---------|--------------------|
| <b>Compressor</b>                 |         |                    |
| Type                              |         | Twin-ROTARY        |
| Model                             |         | KTM240D43UKT       |
| Brand                             |         | GMCC               |
| Capacity                          | (Btu/h) | 25931              |
| Input                             | (W)     | 2045               |
| Rated current (RLA)               | (A)     | 17.1               |
| Refrigerant oil/oil charge        | (ml)    | ESTER OIL VG74 620 |
| <b>Outdoor fan motor</b>          |         |                    |
| Model                             |         | ZKFN-120-8-2       |
| Qty                               |         | 1                  |
| Input                             | (W)     | 150.00             |
| Output                            | (W)     | 120.00             |
| RLA                               | (A)     | 0.50               |
| Speed                             | (r/min) | 950/800/500        |
| <b>Air flow &amp; Noise level</b> |         |                    |
| Outdoor air flow (Max.)           | (CFM)   | 2235.3             |
| Outdoor noise level               | [dB(A)] | 62.0               |
| <b>Outdoor unit</b>               |         |                    |
| Dimension (WxDxH)                 | (inch)  | 37.24x16.14x31.89  |
|                                   | (mm)    | 946x410x810        |
| Packing (WxDxH)                   | (inch)  | 42.91x19.69x34.84  |
|                                   | (mm)    | 1090x500x885       |
| Net/ Gross weight                 | (lbs.)  | 134.48/144.40      |
|                                   | (kg)    | 61/65.5            |

**Indoor unit dimension**



| Capacity (Btu/h) | Unit | A   | B    | C     | D    |
|------------------|------|-----|------|-------|------|
| 24K              | mm   | 165 | 80   | 205   | 50   |
|                  | inch | 6.5 | 3.15 | 8.07  | 1.97 |
| 36K              | mm   | 165 | 100  | 245   | 60   |
|                  | inch | 6.5 | 3.64 | 9.65  | 2.36 |
| 48K              | mm   | 165 | 100  | 287   | 60   |
|                  | inch | 6.5 | 3.64 | 11.30 | 2.36 |

**Outdoor unit dimension**

